



LFF - Lynx 400 Electric Counter-top Fish Fryer - Single Tank - 2 Baskets - W 360 mm - 3.0 kW

The 3kW Lynx 400 Large Single Tank Electric Counter Top Fryer is designed to plug in and play, which means that you'll be producing perfect fried chips in no time at all.

- ✓ Large single tank - ideally suited to free frying of battered or breaded products, especially fish
- ✓ Removable stainless steel tank and batter plate for easy cleaning
- ✓ Removable control head to aid easy cleaning and maintenance
- ✓ Comes with batter plate to allow open frying
- ✓ Thermostatically controlled to give better and more consistent cooking results
- ✓ Nickel plated baskets for easy cleaning
- ✓ Plug and play for an easy installation
- ✓ Safety thermostat to prevent overheat

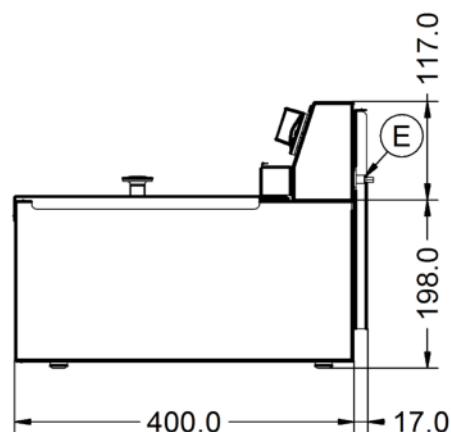
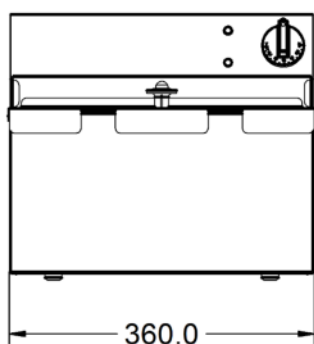
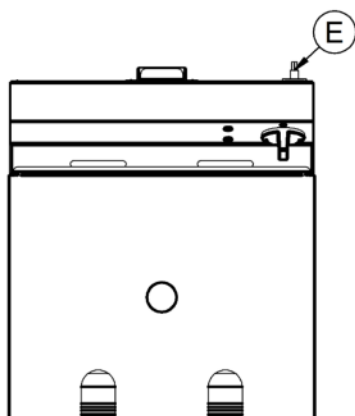
Specifications

Summary		Power and Performance	
Range Name	Lynx 400	Total Power kW	3.0
Power Type	Electric	Temperature Range °C	130 - 190
Unit Type	Counter-top	IP Rating	IP23
Available in UK Only	No	Temperature Control	Mechanical
UK Warranty	2 Years Parts and Labour Warranty		
Export Warranty	Contact your local dealer		
GTIN Code	5056105101048		

Key Specifications		Weights and Dimensions	
Capacity Litres	5.0	Unit Height (External) mm	315
Number of Baskets	2	Unit Width (External) mm	360
Number of Tanks	1	Unit Depth (External) mm	417
Gravity Filtration	No	Net Weight Kg	9.9
Pumped Filtration	No		

Supply Connections		Shipping	
Requires Installation	No	Packed Weight Kg	12
Requires Electrical Supply	Yes	Packed Height cm	42
UK 3 Pin Plug	Yes	Packed Width cm	48.5
Requires Hardwiring	No	Packed Depth cm	48.5
Electrical Supply Rating Watts	3,000		
Single Phase Amps	13.0		
Single Phase Voltage	230		

Technical Picture



Lincat Limited

Whisby Road,
Lincoln, LN6 3QZ,
United Kingdom

Company No: 2175448

A member company of



Customer Care

Tel: +44 1522 875500
Email: care@lincat.co.uk

Export Customers

Tel: +44 1522 503250
Email: export@lincat.co.uk

Opening Hours

Monday – Friday:
8.30am – 5pm