

OLYMPIA

Airpot

Instruction manual



(NL) Pompkan

Handleiding

(FR) Pichet à pompe

Mode d'emploi

(DE) Airpotkanne

Bedienungsanleitung

(IT) Brocca a pompa

Manuale di istruzioni

(ES) Envase hermético

Manual de instrucciones

(PT) Cafeteira

Manual de instruções


**Model • Modèle • Modell • Modello • Modelo • Malli:
K635/K636/DL163/DL164/DP127/DP128/DP129
CN640/CN641**

Safety Tips

Telephone Helpline: 0845 146 2887 (United Kingdom)

The insulated container shall be supplied with an instruction leaflet containing at least the following information and statements.

- Do not use to store or carry carbonated drinks', unless clearly and positively marked by the manufacturer.
- In order to minimise bacterial growth, do not use to keep warm milk products or baby food.
- Pre-heat or pre-cool the container with water to ensure efficient use and to reduce the risk of breakage of the glass filler.
Never use microwave or conventional ovens for this purpose.
- The container should be periodically cleaned. The best results are obtained using a mixture of water and bicarbonate of soda or washing up liquid. Rinse thoroughly afterwards.
- Never use in a dishwasher, unless otherwise stated by the manufacturer.

 Do not carry when filled.

Introduction

Please take a few moments to carefully read through this manual. Correct maintenance and operation of this machine will provide the best possible performance from your OLYMPIA product.

Pack Contents

The following is included:

- OLYMPIA Beverage Dispenser
- Instruction Manual

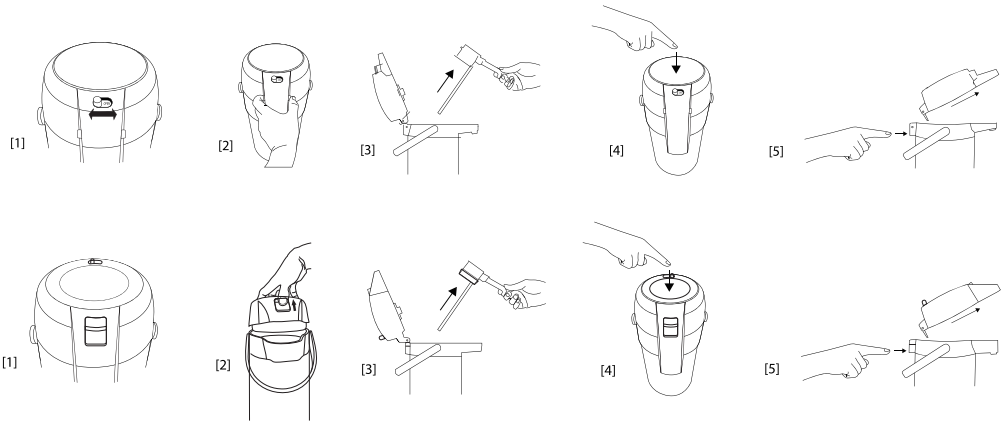
OLYMPIA prides itself on quality and service, ensuring that at the time of packaging the contents are supplied fully functional and free of damage.

Should you find any damage as a result of transit, please contact your OLYMPIA dealer immediately.

Operation

1. Open pump button.
2. Squeeze the two buttons on the spout to release the lid, then lift the lid.
(for K635/K636/DL163/ DL164/DP127/DP128/DP129), Or
Press and hold the button to release and lift the lid. (for CN640/CN641)
3. Remove the flow pipe and fill. Replace the flow pipe and lid.
4. Push the pump button down repeatedly to pump out contents.
5. To remove lid, push the lid release tab at the back of the appliance.

 **Note: If filling the appliance with hot liquid, fill and empty the airpot with hot water beforehand to help maintain a higher temperature.**



Cleaning, Care & Maintenance

- Use warm, soapy water and a damp cloth to clean the appliance.
- Dry thoroughly after cleaning.
- Do not store the appliance while it still contains liquid.

Compliance

OLYMPIA parts have undergone strict product testing in order to comply with regulatory standards and specifications set by international, independent, and federal authorities.

OLYMPIA products have been approved to carry the following symbol:



All rights reserved. No part of these instructions may be produced or transmitted in any form or by any means, electronic, mechanical, photocopying, recording or otherwise, without the prior written permission of OLYMPIA. Every effort is made to ensure all details are correct at the time of going to press, however, OLYMPIA reserve the right to change specifications without notice.