



HCL3 - Silverlink 600 Free-standing Heated Pedestal with Legs and Doors - W 300 mm - 0.25 kW

Designed to suite with other products in the Silverlink 600 range, the Heated Pedestal (top and legs) features an on/off switch and thermostatic control, making it ideal as a plate warmer.

- ✓ Designed to suite with the Silverlink 600 range
- ✓ Features an on/off switch and thermostatic control, making them ideal as plate warmers
- ✓ Silverlink 600 counter-top units are securely attached to pedestals by means of fixing screws supplied
- ✓ Adjustable shelf provides flexibility for storing bulky items
- ✓ Adjustable legs for perfect alignment even on uneven floors

Specifications

Summary

| | |
|-----------------------------|-----------------------------------|
| Range Name | Silverlink 600 |
| Power Type | Electric |
| Unit Type | Free-standing |
| Available in UK Only | No |
| UK Warranty | 2 Years Parts and Labour Warranty |
| Export Warranty | Contact your local dealer |
| GTIN Code | 5056105100966 |

Power and Performance

| | |
|-----------------------------|--------------|
| Total Power kW | 0.25 |
| Temperature Range °C | 70[constant] |
| Temperature Control | Mechanical |

Key Specifications

| | |
|-----------------------------------|---|
| Number of Shelves included | 1 |
| Number of Shelf Positions | 3 |

Weights and Dimensions

| | |
|----------------------------------|------|
| Unit Height (External) mm | 668 |
| Unit Width (External) mm | 300 |
| Unit Depth (External) mm | 600 |
| Height (Internal) mm | 422 |
| Width (Internal) mm | 298 |
| Depth (Internal) mm | 566 |
| Shelf Dimensions Width mm | 250 |
| Shelf Dimensions Depth mm | 530 |
| Net Weight Kg | 18.7 |

Supply Connections

| | |
|---------------------------------------|-----|
| Requires Installation | No |
| Requires Electrical Supply | Yes |
| UK 3 Pin Plug | Yes |
| Requires Hardwiring | No |
| Electrical Supply Rating Watts | 250 |
| Single Phase Amps | 1.1 |
| Single Phase Voltage | 230 |

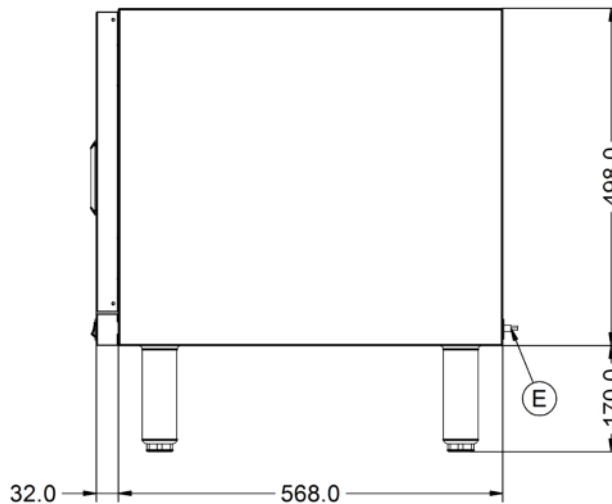
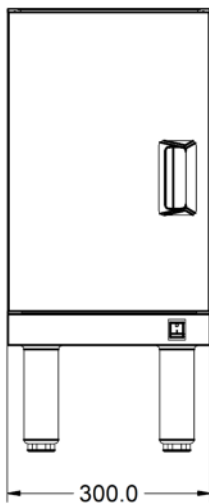
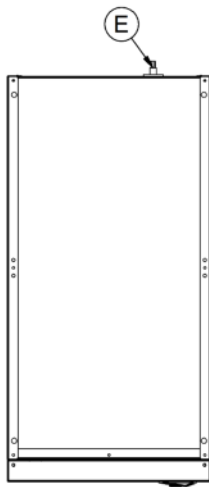
Shipping

| | |
|-------------------------|------|
| Packed Weight Kg | 24.1 |
| Packed Height cm | 49.5 |
| Packed Width cm | 70 |
| Packed Depth cm | 70 |

Available Accessories

| | |
|-------------|--------------------|
| PSH3 | 300 PEDESTAL SHELF |
|-------------|--------------------|

Technical Picture



Lincat Limited

Whisby Road,
Lincoln, LN6 3QZ,
United Kingdom

Company No: 2175448

A member company of



Customer Care

Tel: +44 1522 875500
Email: care@lincat.co.uk

Export Customers

Tel: +44 1522 503250
Email: export@lincat.co.uk

Opening Hours

Monday – Friday:
8.30am – 5pm