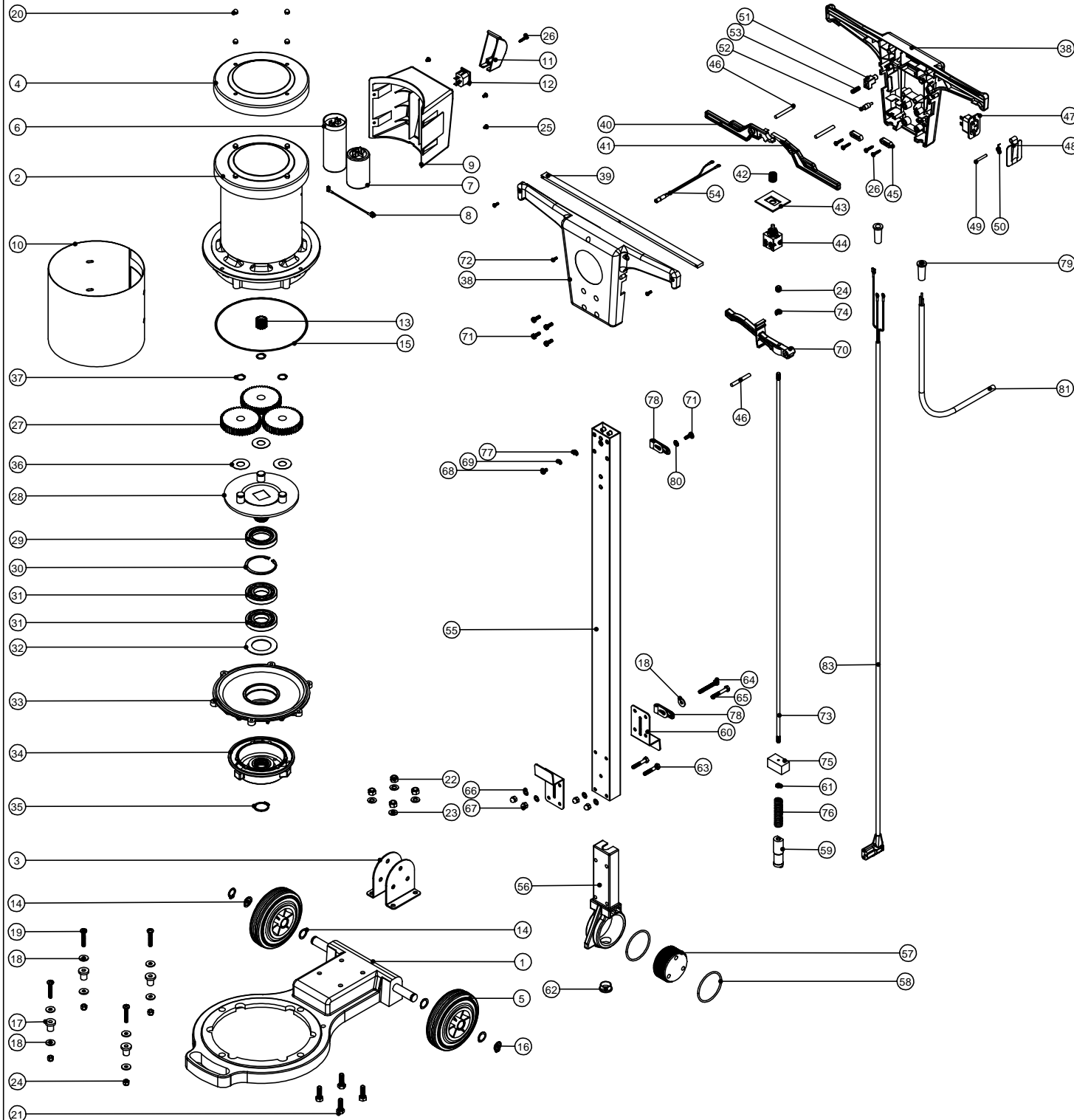


# Numatic International Spare Parts

Model No: NPO-1425

234032  
DRAWING: EXP463 ISS:A01  
23/06/00



# Numatic International Spare Parts

Model No: NPO-1425

POS:	PART NO:	DESCRIPTION:	COMMENTS:
1	414009	NPO 1425 CASTING PAINT GREEN	
	414055	NPO 1425 CASTING PAINT BLUE	
	414057	NPO 1425 CASTING PAINT RED	
2	205003	240V X 1 HP MOTOR	
	205004	240V (50Hz) X 1.5 HP MOTOR	
	205011	110V (50Hz) X 1 HP MOTOR	
	205006	110V (50Hz) X 1.5 HP MOTOR	
	205013	120V (60Hz) X 1 HP MOTOR	
	205002	120V (60Hz) X 1.5 HP MOTOR	
3	429006	HANDLE MOUNTING BRACKET	
4	429020	BLACK MOTOR CAP SPINNING	
5	229060	125MM DIAMETER WHEEL	
6	220022	MOTOR START CAPACITOR 100 MFD	USE WITH 240V X 1 HP MOTOR
	220117	MOTOR START CAPACITOR 160 MFD	USE WITH 240V X 1.5 HP MOTOR
	220090	MOTOR START CAPACITOR 480 MFD	USE WITH 110V/120V X 1.0 & 1.5 HP MOTORS
7	220024	MOTOR RUN CAPACITOR 10 MFD	USE WITH 240V X 1 HP MOTOR
	220104	MOTOR RUN CAPACITOR 15 MFD	USE WITH 240V X 1.5 HP MOTOR
	220103	MOTOR RUN CAPACITOR 40 MFD	USE WITH 110V/120V X 1.0 & 1.5 HP MOTORS
8	220119	BROWN LINK WIRE	
9	229141	CAPACITOR BOX MOULDING	
10	329022	STAINLESS STEEL MOTOR SHROUD	FOR USE WITH 1HP MOTOR
	329023	STAINLESS STEEL MOTOR SHROUD (1200W)	FOR USE WITH 1.5HP MOTOR
11	229213	PLUG COVER	
12	220584	RENDAR CLIP IN PLUG	
13	230027	12 TOOTH PINION GEAR (STANDARD SPEED)	
	230025	20 TOOTH PINION GEAR (50Hz MEDIUM SPEED / 60Hz HIGH SPEED)	
	230028	24 TOOTH PINION GEAR (HIGH SPEED)	
14	219219	21.5MM X 16.3MM WAVE WASHER	
15	230001	V OIL SEAL	
16	229051	EXTERNAL CIRCLIP	
17	219146	RUBBER MOUNTING	
18	219008	M6 FORM G WASHER	
19	219268	M6 X 35MM LONG POZI PAN SCREW	
20	219093	M5 DOMENUT	
21	219092	M8 X 25MM LONG HEX BOLT	
22	219078	M8 STIFFNUT	
23	219010	M8 FORM A WASHER	
24	219088	M6 STIFFNUT	
25	219095	M4 X 6MM LONG POZI PAN TAPTITE SCREW	
26	219107	No6 X 5/8" LONG PLASTITE SCREW	
27	230013	48 TOOTH SPUR GEAR(STANDARD SPEED 50/60HZ)	
	230026	44 TOOTH SPUR GEAR(50Hz MEDIUM SPEED / 60HZ HIGH SPEED)	
	230014	42 TOOTH SPUR GEAR(HIGH SPEED 50/60HZ)	
28	230291	PLANET CARRIER & PIN ASSEMBLY (50HZ STANDARD SPEED)	
	230292	PLANET CARRIER & PIN ASSEMBLY (50HZ MEDIUM SPEED / 60HZ HIGH SPEED)	
	230294	PLANET CARRIER & PIN ASSEMBLY (50HZ HIGH SPEED)	
29	230002	DOUBLE LIP OIL SEAL	
30	230200	62MM INTERNAL CIRCLIP	
31	230004	62 O/D X 30 I/D BEARING	
32	219261	61.8/62MM OD 38/38.2 ID BLACK WASHER	
33	230208	DIE CAST BOTTOM PLATE ASSEMBLY	
34	230207	CHUCK	
35	230048	26MM EXTERNAL CIRCLIP	
36	230215	35MM X 15 I/D ALUMINIUM WASHER	
37	230015	15MM EXTERNAL CIRCLIP	
38	229017	HANDLE BOX MOULDING BLACK	
39	229076	SUPPORT STRIP	
40	229001	RIGHTHAND SWITCH LEVER	
41	229000	LEFTHAND SWITCH LEVER	
42	229028	SPRING	
43	229011	SWITCH PLATE	
44	229010	SWITCH	
45	227008	CABLE CLAMP	
46	229071	LEVER MOUNTING PIN	
47	229018	POWER TAKE OFF SOCKET	
48	229032	FLAP	
49	229035	FLAP PIVOT PIN	
50	229034	FLAP TORSION SPRING	
51	229066	RELEASE BUTTON	
52	229033	BLANKING PIN	
53	219323	COMPRESSION SPRING	
54	320074	240V HANDLE NEON INDICATOR ASSEMBLY	
	320075	110V HANDLE NEON INDICATOR ASSEMBLY	
55	429029	ALUMINIUM HANDLE	
56	229081	HANDLE CASTING	
57	229074	ADJUSTMENT GEAR	
58	219254	O-RING	
59	229073	GEAR LOCKING PIN	
60	304172	(STAINLESS STEEL) MOUNTING BRACKET	
61	219099	M6 HALFNUIT	
62	229099	25MM DIAMETER HOLE PLUG	
63	219064	M6 X 35MM LONG HEX HEAD BOLT	
64	219230	M6 X 45MM LONG HEX BOLT	
65	21965V	M6 X 40MM LONG HEX HEAD BOLT	
66	219007	M6 FORM B WASHER	
67	219080	M6 DOMENUT	
68	219047	M5 X 10MM LONG POZI PAN SEMS SCREW	
69	219003	M5 FORM A WASHER	
70	229003	ADJUSTMENT LEVER	
71	219045	M5 X 16MM LONG POZI PAN SEMS SCREW	
72	219212	M3.5 X 10MM LONG TAPTITE SCREW	
73	229126	LOCKING ROD	
74	219017	M6 DOUBLE COIL SPRING WASHER	
75	229030	ANTI VIBRATION PAD	
76	229138	SPRING	
77	219153	2BA BRASS CUP WASHER	
78	229139	P - CLIP	
79	220015	STRESS RELIEF	
80	219005	M5 FORM G WASHER	
81	220254	MAINS CABLE (3 WIRE/EURO PLUG)	
	229090	MAINS CABLE (3 WIRE UK PLUG)	
	220221	MAINS CABLE (3 WIRE USA/CSA PLUG)	
	220224	MAINS CABLE (3 WIRE SWISS PLUG)	
	220127	MAINS CABLE (3 WIRE NO PLUG)	
83	229249	MOTOR LEAD ASSEMBLY	
	220685	MOTOR LEAD ASSEMBLY (120V - CSA)	