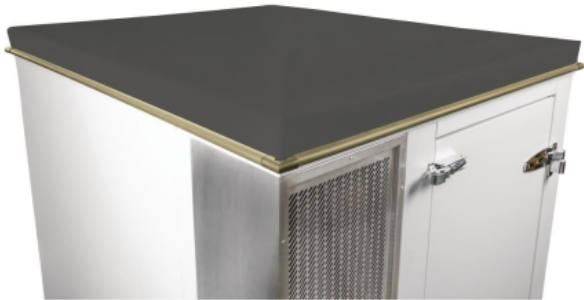


Polar Weatherproof Roof for DS482 Cold Room Anthracite Grey DT270

1600 x 1900mm roof

Code : DT270

View Product



41% OFF Sale

£1,137.27

£668.99 / exc vat

£802.79 / inc vat

Select Shipping Method

- Allow 2 -3 weeks for delivery

Notes :

- Please check door entry sizes before ordering.
- Delivery is made to kerbside only.
- Drivers do not unpack or position goods.
- A 25% restocking charge will apply for all returned goods.

If you plan to install a Polar cold room outdoors, its likely that youll need a tough and durable weatherproof roof to protect it from the elements.

This roof is just that - a long-lasting and hard-wearing single-piece roof which is resistant to tearing, cold, water and more.

- Dimensions1600(W) x 1900(D)mm
- No maintenance required
- Tensile strength - warp 2000, weft 1500 BS3424/5A
- Tear Strength - BS3424/9B
- Cold Crack - BS3424/10 - 25C
- Single sheet. No join reduces leaks
- Material : PVC Coated Polyester

EasyEquipment make every reasonable effort to ensure the accuracy and validity of the information provided on its web and PDF pages. However, as product information, technical details and prices are continually changing, EasyEquipment reserve the right to change at any time without notice, information contained on its website and make no warranties or representations as to its accuracy. EasyEquipment © 2024, All rights reserved. E&OE. Page printed on "05-05-2024" at "03:31:55"