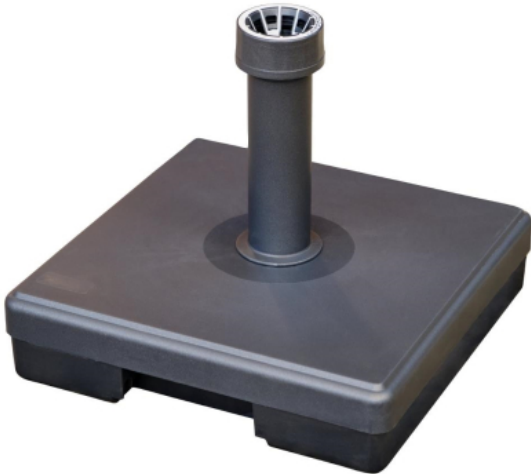


Woodberry Concrete Parasol Base 30kg

Weight: 30kg. Material: Concrete

Code : CH001

View Product



16% OFF Sale

£234.00

£196.07 / exc vat

£235.28 / inc vat

Select Shipping Method

- 2-3 Working Days Delivery

Notes :

- Please check door entry sizes before ordering.
- Delivery is made to kerbside only.
- Drivers do not unpack or position goods.
- A 25% restocking charge will apply for all returned goods.

This 30kg concrete-filled parasol base is ideal for commercial hospitality venues needing to support parasols up to 3m in diameter.

The base can accommodate a great range of pole sizes - from 25mm to 52mm wide. Plastic feet underneath the base protect your patio from being scratched and a wheel ensures easy manoeuvring when you need to move the base.

Size

Unit	Height	Width	Depth
Mm	345	400	400
Cm	34.5	40	40
Inches (approx)	13	15	15

- Concrete base encased in polypropylene resin surround
- Accommodates parasol poles from 25mm to 52mm diameter
- Suitable for parasols up to 3m diameter
- Wheels for easy manoeuvring
- Plastic feet to protect your patio surface
- Base for use under table only to ensure stability of parasol pole, not recommended for free-standing use.
- Material : Concrete