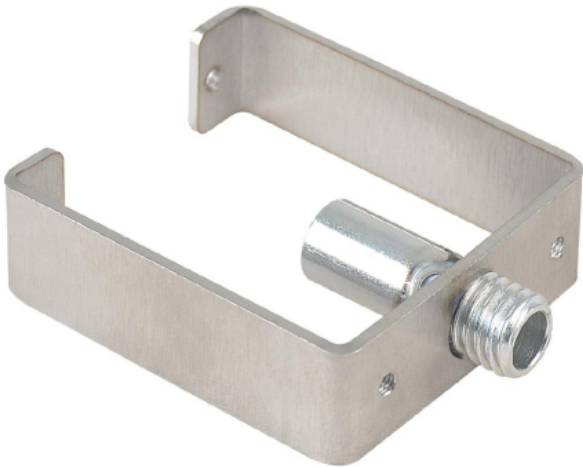


Buffalo Reset Plate AG598

Buffalo Reset Plate for CD474, DM902, DM903, GF256,GJ452, GJ454, GJ455, GJ456, L501, L503, L511, L515, L518, L519, L530, L537, L553, L554, L555, P108, P109

View Product

Code : AG598



40% OFF Sale

£21.57

£12.99 / exc vat

£15.59 / inc vat

Select Shipping Method

- Next Working Day Delivery

Notes :

- Please check door entry sizes before ordering.
- Delivery is made to kerbside only.
- Drivers do not unpack or position goods.
- A 25% restocking charge will apply for all returned goods.

This genuine Buffalo Reset Plate is part of the machine reset mechanism.

Designed for use in Buffalo models CD474, DM902, DM903, GF256,GJ452, GJ454, GJ455, GJ456, L501, L503, L511, L515, L518, L519, L530, L537, L553, L554, L555, P108 and P109.

EasyEquipment make every reasonable effort to ensure the accuracy and validity of the information provided on its web and PDF pages. However, as product information, technical details and prices are continually changing, EasyEquipment reserve the right to change at any time without notice, information contained on its website and make no warranties or representations as to its accuracy. EasyEquipment © 2024, All rights reserved. E&OE. Page printed on "03-05-2024" at "21:25:08"