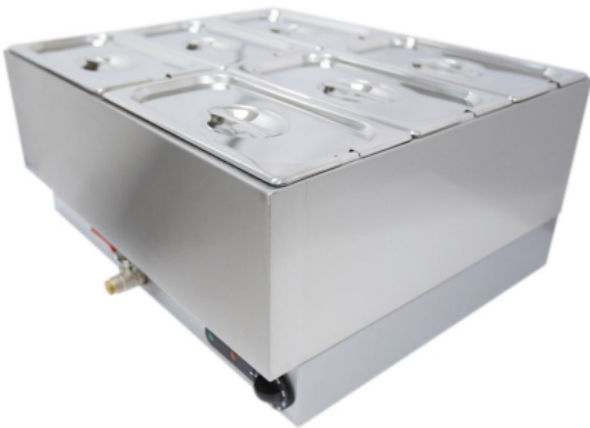


Parry Gastronorm Bain Marie 1985

3kW Wet Heat. Capacity: 6x GN 1/3

Code : 1985

View Product



50% OFF Sale

£1,273.00

£636.99 / exc vat

£764.39 / inc vat

Select Shipping Method

- 2-3 Working Days Delivery
- Next Working Day delivery - £29.95 + £29.95

Notes :

- Please check door entry sizes before ordering.
- Delivery is made to kerbside only.
- Drivers do not unpack or position goods.
- A 25% restocking charge will apply for all returned goods.

With its high capacity, the Parry 1985 wet well bain marie is versatile, functional and perfectly suited to commercial catering.

Made from high quality stainless steel, this commercial bain marie has an easy-drain valve and precise thermostat control.

Size

Unit	Height	Width	Depth
Mm	300	660	560
Cm	30	66	56
Inches (approx)	11	25	22

- 6 x 1/3 GN pan capacity
- Thermostat control
- Manufactured from high grade stainless steel
- With drain tap
- Gastronorm pans included, will take up to 150mm deep
- Supplied with a 13amp plug
- Power Type : 642
- Power Supply : 613
- Material : Stainless Steel
- Capacity : 2 x 1/1